 **Accessible Media Policies:**

**A Canadian Model for Development, Implementation and Sustainability in Post-Secondary Institutions**

Presented by:

Karen Walker, MSW, RSW and Anne Villahermosa, MA Ed.

AHEAD 2010 – Denver, Colorado  
July 14, 2010

---

---

---


---

---

---

---

---

 **Session Outline**

- Introduction
- Forces & Facilitators of Change
- Developing Partnerships
- Policy Design Elements
- Policy Implementation Strategies
- The Innovation Process
- Policy Sustainability
- Video
- Policy Impact Assessment

---

---

---


---

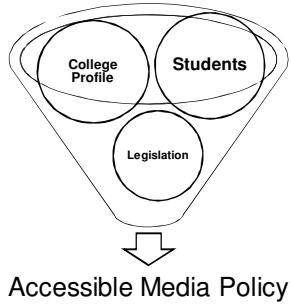
---

---

---

---

 **Forces of Change**



Accessible Media Policy

---

---

---

---

---

---

---

---



---

---

---

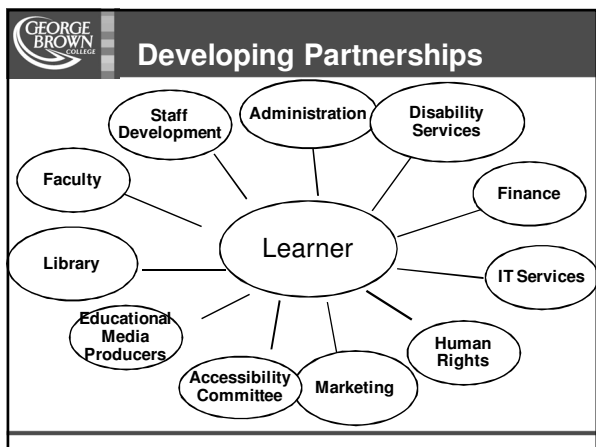
---

---

---

---

---



---

---

---

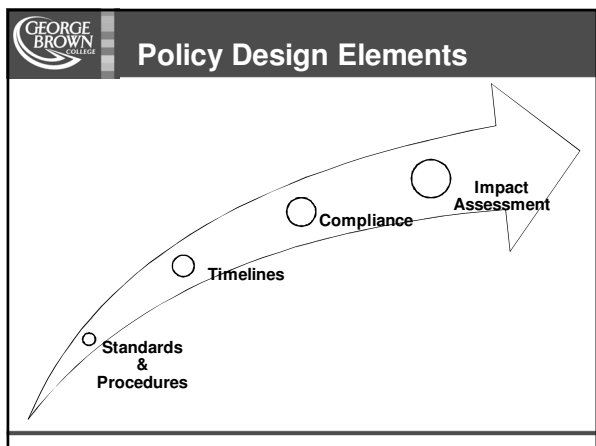
---

---

---

---

---



---

---

---

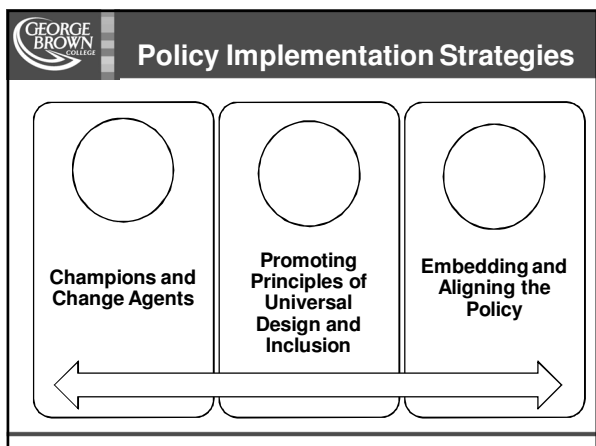
---

---

---

---

---



---

---

---

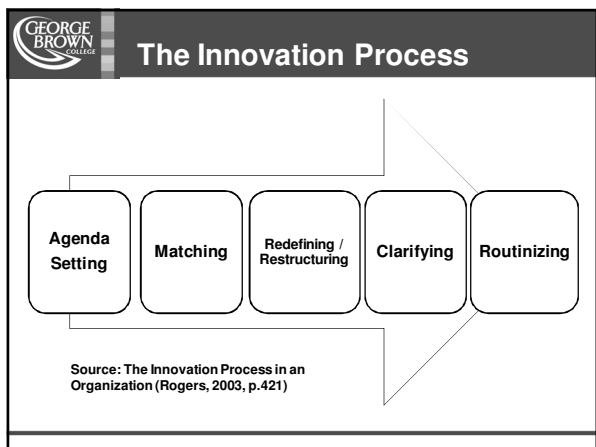
---

---

---

---

---



---

---

---

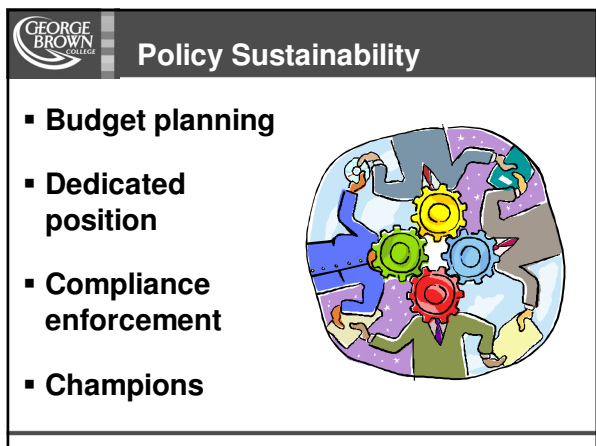
---

---

---

---

---



---

---

---

---

---

---

---

---

**GEORGE BROWN COLLEGE** Video – “Why Captioned Media”



---

---

---

---

---

---

---

---

**GEORGE BROWN COLLEGE** Policy Impact Assessment

- Surveys
- Forums
- Human Rights



---

---

---

---

---

---

---

---

**GEORGE BROWN COLLEGE** Contact Information

<p><b>Karen Walker, MSW, RSW</b> Disability Consultant Deaf &amp; Hard of Hearing Services George Brown College 416.415.5000 extension 4654 kwalker@georgebrown.ca <a href="http://researchguides.georgebrown.ca/accessibility">http://researchguides.georgebrown.ca/accessibility</a></p>	<p><b>Anne Villahermosa, MA Ed.</b> Accessible Media Co-ordinator Educational Resources George Brown College 416.415.5000 extension 2782 avillahe@georgebrown.ca <a href="http://researchguides.georgebrown.ca/captionedmedia">http://researchguides.georgebrown.ca/captionedmedia</a></p>
--	--

---

---

---

---

---

---

---

---